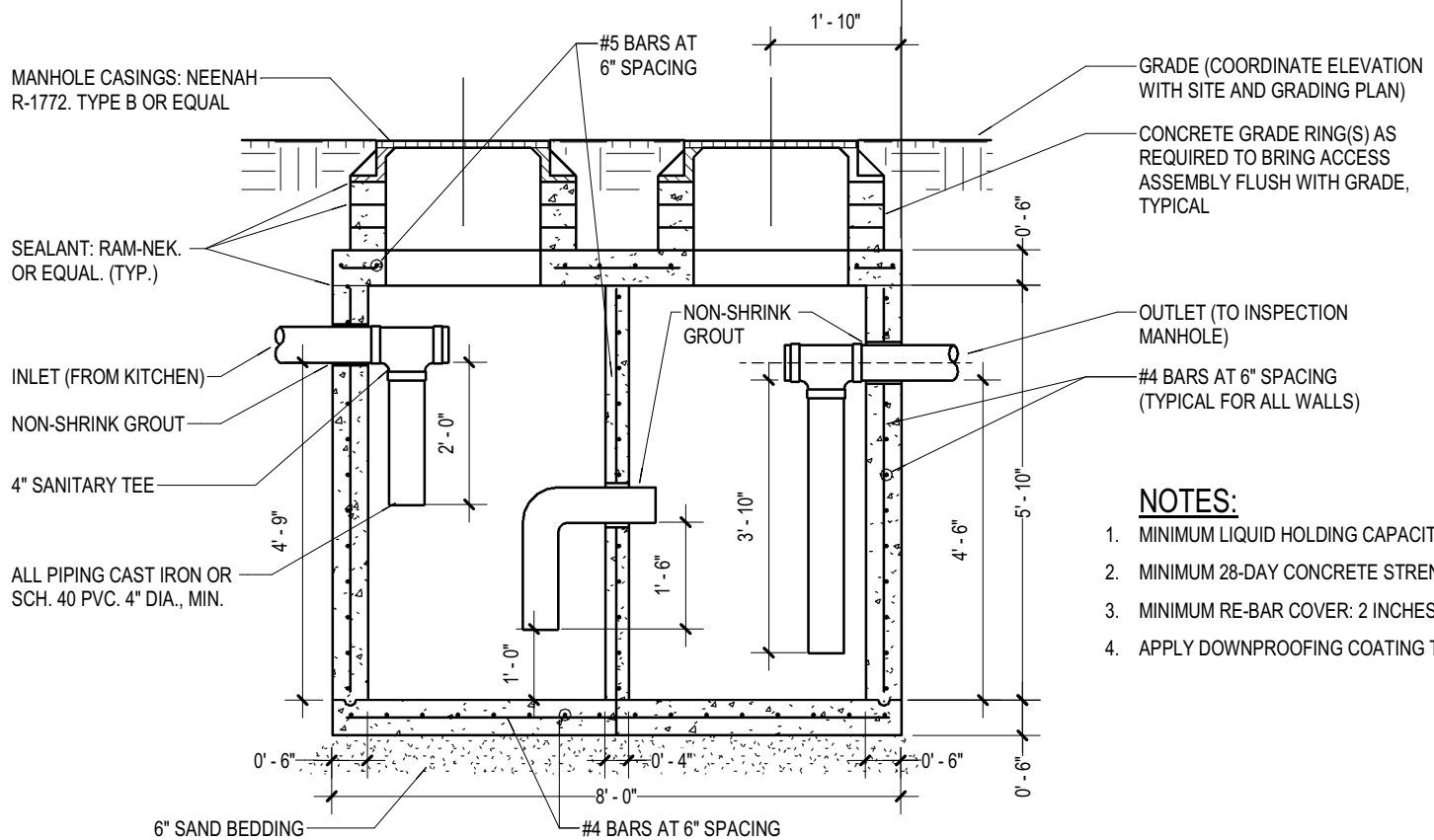


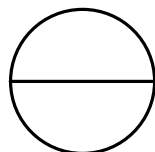
GREASE SEPARATOR - TOP VIEW



GREASE SEPARATOR - ELEVATION

NOTES:

1. MINIMUM LIQUID HOLDING CAPACITY: 1,000 GALLONS.
2. MINIMUM 28-DAY CONCRETE STRENGTH: 4,000 PSI.
3. MINIMUM RE-BAR COVER: 2 INCHES
4. APPLY DOWNPROOFING COATING TO EXTERIOR SURFACES



GREASE SEPARATOR

NOT TO SCALE