

All piping:  
Cast iron or  
Schedule 40 PVC.  
Minimum diameter: 4"

Cleanout  
plug  
0' 4"

14 bars,  
centered in  
slab (Typ.)

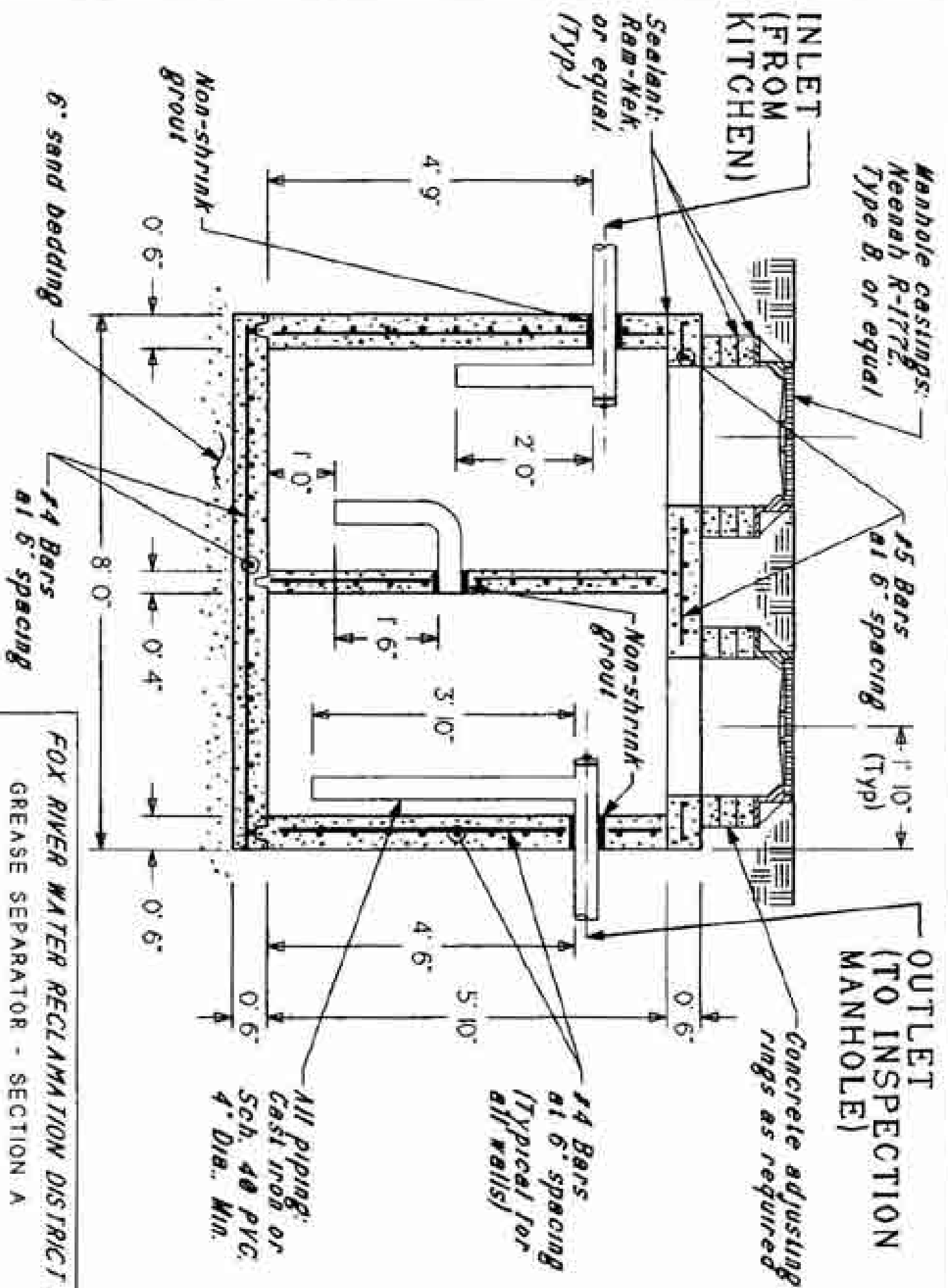
OUTLET  
(TO INSPECTION  
MANHOLE)

All Corner Bars:  
14 Bars at 6"  
18" legs.

ADDITIONAL  
REQUIREMENTS:

1. Minimum liquid holding capacity: 1,000 gallons.
2. Minimum 28-day concrete strength: 4,000 psi.
3. Minimum re-bar cover: 2 inches.

**FOX RIVER WATER RECLAMATION DISTRICT**  
GREASE SEPARATOR - PLAN VIEW  
DATE: June 1985 SCALE: 1/2" = 1' SHEET NO. 1 of 2



**FOX RIVER WATER RECLAMATION DISTRICT**  
 GREASE SEPARATOR - SECTION A  
 DATE: June, 1985    SCALE: 1/2" = 1'    SHEET NO. 2 of 2